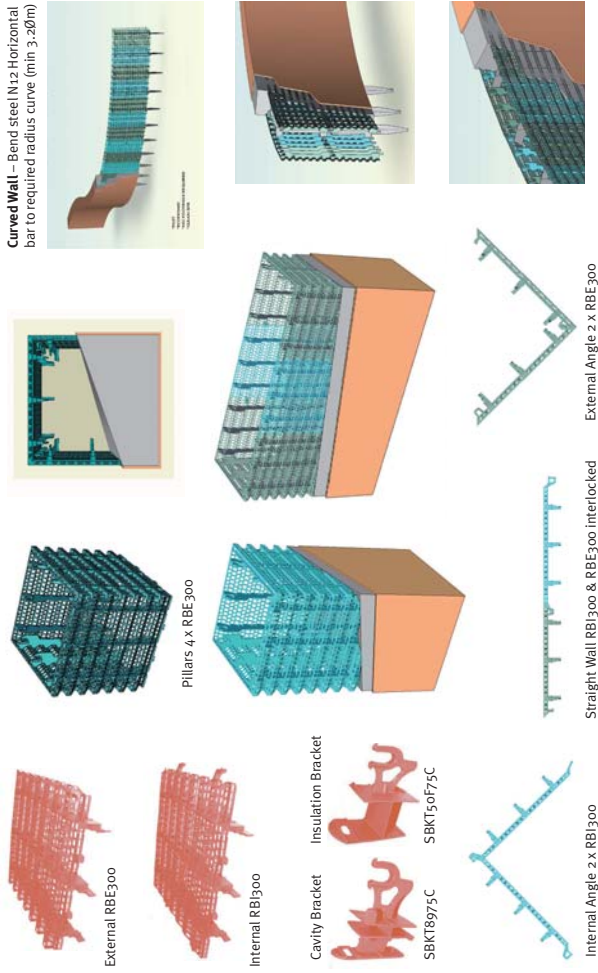


Forma-Tech Patented Panels

Forma-Tech panels are 300mm sq perforated plastic panels designed with reinforced ribs and brackets to enable them to be simply and securely fastened to each other and the steel reinforcing bar behind the panels. The panels' purpose is to provide robust leaky formwork during the concrete pour and also to allow sufficient concrete mixture to extrude through the perforations to provide a trowelled flat base for a rendered finish.

Panel and Bracket Configurations

Panels can be configured for straight walls, corners, curves and a range of structural applications including piers and columns.



The Forma-Tech Wall building System

The Forma-Tech system allows for steel reinforced concrete rendered walls to be poured on site quickly and cost effectively without exposed external formwork. The result is a structurally superior wall that is multi-storey capable, time and labour saving and can be built by community/low skilled labour with minimal training needed. The system reduces heavy lifting usually associated with building projects and requires no special handling or lifting equipment.

Homes built using the Forma-Tech system are energy efficient, costing less to maintain with significant savings in heating and cooling costs creating a more comfortable living environment and a superior quality affordable home.

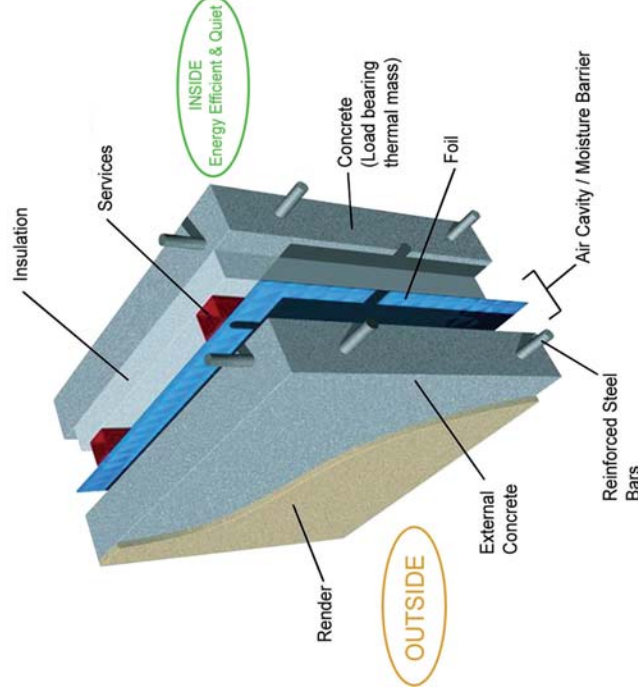
How it works

The lightweight, clip together formwork combines engineered plastic panels with conventional steel reinforcement rods. Panels are clipped together up, row by row on site – one floor at a time.

Once erected, concrete is poured into the formwork and sets seamlessly to the desired wall shape and size.

Our unique panel system allows the concrete to extrude through perforations to be trowel finished providing a flat concrete surface that can be painted or rendered or have other decorative finishes, cladding or facings applied. The end result is a structurally superior, environmentally friendly, energy efficient, more comfortable home and affordable method of wall construction.

The system is suitable for all types of wall structures, wall shapes and finishes including industrial walls, residential homes, multi-storey buildings, retaining walls, feature fences, garden walls, water features, ponds, water containment/water tanks, large piers, columns, foundations and structural work, civic engineering, pits & drains, and many other applications.



Forma-Tech Advantages

Forma-Tech's products result in substantially reduced construction time around 1/3 less than equivalent brick dwellings. Fewer materials are used, less waste is produced and there is a significant increase in labour, productivity, and equipment utilisation. For the builder, this means more projects in the same time frame, faster turnaround, improved cash flow and superior quality housing product – with a lower trade requirement.

Consumer benefits are significant – a superior quality home without the price premium delivering cheaper energy and maintenance costs for the life of the home.



Forma-Tech Wall Types

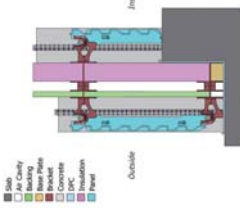
The Forma-Tech wall building system is available in a number of configurations to suit domestic and commercial properties in single or multi-storey applications. The various wall types can be integrated seamlessly into the home design allowing greater architectural freedoms and a better engineering value proposition.

The Range

Wall configurations to suit any budget or application.

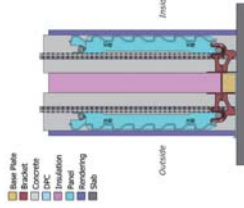
The Forma-Tech Double Range

Premium Double - double concrete skin cavity wall system suited to multi-storey applications requiring 5 Star plus energy rating in premium quality residential or commercial developments.



Double skin load bearing wall with insulation integral, moisture control and services cavities, external rendered finish internal hard plaster finish. Wonderful acoustic and thermal properties. The first choice for prestige home builds without compromise on quality for the most discerning home buyer.

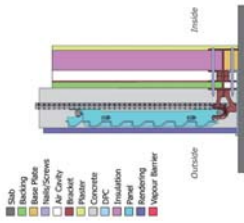
Insulated Double - insulated double wall (sandwich) without cavities



A structurally superior narrow footprint wall ideal for party walls, dividing walls, sound studios, music rooms, gyms, mas-rooms, home theatres, cellars, cool rooms, wineries and restaurants etc. Perfect for true passive solar design applications with high internal thermal mass providing more even room temperatures and genuine energy savings. A quieter, more comfortable living environment.

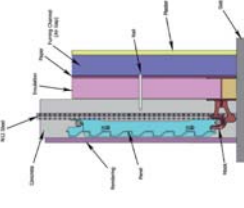
The Forma-Tech Single Range

Solid Insulated Cavity Wall - single skin solid load bearing wall with insulation, services/moisture control cavity and internal plaster finish.



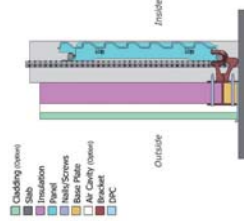
Full featured economical solid insulated load bearing wall for quality single or double storey homes, with excellent thermal properties and energy efficiency for comfortable living all year round. Price competitive - no external frame is required. Great for quality home builds in Environmentally Sustainable Developments.

Solid Insulated - single skin solid load bearing wall with insulation, screwed and glued internal plaster finish (with optional air gap shown)



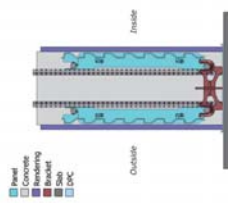
A narrow load bearing wall for commercial and residential building that provides a structurally superior rendered external wall without the need and additional cost of a steel or timber supporting frame. A low maintenance, tough outer wall system that represents a superior long term investment compared to other ICF technologies.

Reverse Solid Insulated Wall Solid Reverse - Single skin concrete inside 100mm thick (load bearing without frame) with insulation - externally clad.



Ideal for passive solar design applications with high thermal mass properly positioned with insulation and external cladding to customer requirements. Combining different wall technologies for true environmentally friendly energy efficient building with unlimited design potential.

Solid Wall - Structurally superior load bearing wall to engineers' specification for party walls, retaining walls, general home and office building as well as numerous landscaping applications including high security fencing, swimming pools, tanks and water features.

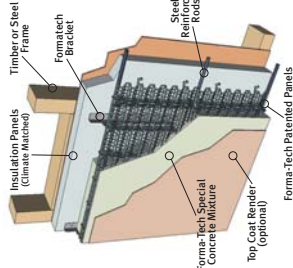


Solid concrete and steel reinforced load bearing wall in standard widths 110mm, 155mm, 255mm and 355mm or can be customized to engineers' specification. Fast and simple to erect there are a multitude of applications for this product in domestic and commercial building, landscaping and in civil engineering. Particularly suited to remote and difficult applications the lightweight panels require no special lifting equipment and can be easily installed by low skilled labour.

The Forma-Tech Veneer Range

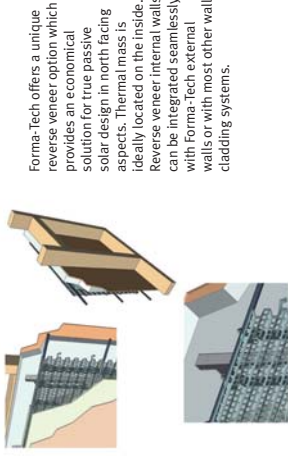
Our superior veneer system that attaches to a steel or timber frame for quality rendered veneer finish homes for the astute budget conscious buyer.

Standard Veneer - Single skin concrete veneer 80mm thick (non load bearing) with fixings to suit a standard timber or steel frame.



The Forma-Tech Veneer Wall is a cost effective alternative to brick and goes up in a fraction of the time using a standard steel or timber frame. Optional batt type wall insulation or sheet insulation with higher R values can be specified. Forma-Tech patented fiberglass reinforced plastic brackets or steel supports brackets can be used depending on the application and the external wall framing system.

Reverse Veneer - Preferred external cladding on stud frame lined with insulation and single skin interior wall, painted, rendered or hard plaster finish.



Forma-Tech offers a unique reverse veneer option which provides an economical solution for true passive solar design in north facing aspects. Thermal mass is ideally located on the inside. Reverse veneer internal walls can be integrated seamlessly with Forma-Tech external cladding systems.

Custom walls

Custom designed and engineered for special project requirements.

Forma-Tech wall types can be combined and integrated seamlessly into any project for optimal design outcomes without the price premium.

Optional Accessories and Add-ons

The Forma-Tech system can incorporate many commonly available accessories, components and finishes including:-

- Weep holes with spark arrestors and vermin proof grates
- Power point and light switch modules
- Plumbing and electrical fittings
- Insulation to customer requirements
- Double glazing
- Claddings, facings and decorative mouldings, trims and finishes

All matched to suit the specific customer requirements.

Forma-Tech Applications

- Superior Quality Homes
- Commercial Buildings
- Structural Work
- Piers and Columns
- Retaining Walls and Landscaping
- Pools, water tanks and water features
- Water Retention
- Pits and Drains
- Sound Barriers
- Above ground Footings and Foundations
- Fences
- Roadside Retaining walls
- Decorative Uses
- Vertical Gardens
- Feature Walls
- Textures and Finishes